

CONSTRUCTION STRUCTURE STRUKTUR STRUCTUUR Tufting 1/10" saxony
 Tufté 1/10" saxony
 Getuftet 1/10" saxony
 Getuft 1/10" saxony

PILE MATERIAL COMPOSITION DU VELOURS POLMATERIAL POOLMATERIAAL 100% PA 6 IMPREL®

PRIMARY BACKING SUPPORT TRÄGERMATERIAL TUFTDOEK Non woven PES
 Non tissé
 Vlies
 Felt

SECONDARY BACKING DOSSIER RÜCKEN TAPIJTRUG Action Back

PILE WEIGHT POIDS DU VELOURS POLEINSATZGEWICHT POOLGEWICHT Ca. 900 gr/m²

TOTAL WEIGHT POIDS TOTAL GESAMTGEWICHT TOTAAL GEWICHT Ca. 1.875 gr/m²

PILE HEIGHT EPAISSEUR DU VELOURS POLHÖHE POOLHOOGTE Ca. 4 mm

TOTAL HEIGHT EPAISSEUR TOTAL GESAMTHÖHE TOTALE DIKTE Ca. 7 mm

TUFT DENSITY NOMBRES DE POINTS NOPPENZAHL AANTAL PUNTEN Ca. 170 000/m²

PILE DENSITY DENSITÉ DU VELOURS POLROHDICHTHEIT POOLDICHTHEID Ca. 0.143 g/cm³

CLASSIFICATION CLASSEMENT KLASSIFIKATION CLASSIFICATIE EN 1307
 32 - LC2

UPEC U3 P3 E1 C0
 Certification CSTB:
 10/276-03

CASTOR CHAIR SUITABILITY CHAISE À ROULETTES STUHLROLLENEIGNUNG ROLSTOELGESCHIKTHEID EN 985
 A: intensive use

STAIR SUITABILITY ESCALIERS TREPPENEIGNUNG TRAPPENGESCHIKTHEID EN 1963
 A: intensive use

PERMANENTLY ANTISTATIC ANTISTATIQUE PERMANENT PERMANENT ANTISTATISCH PERMANENT ANTISTATISCH ISO 6356
 ≤ 2 kV

IMPACT NOISE RATING ISOLATION PHONIQUE TRITTSCHALLVERBESSERUNG GELUIDSISOLATIE ISO 140-8
 24 dB ΔLw

SOUND ABSORPTION ABSORPTION PHONIQUE SCHALLABSORPTIONSGRAD GELUIDSABSORPTIE ISO 354
 0.20 Cw

THERMAL RESISTANCE RÉSISTANCE THERMIQUE WÄRMEDURCHLASSWIDERSTAND WARMTEDOORLAATWEERSTAND ISO 8302
 0.15 m² K/W

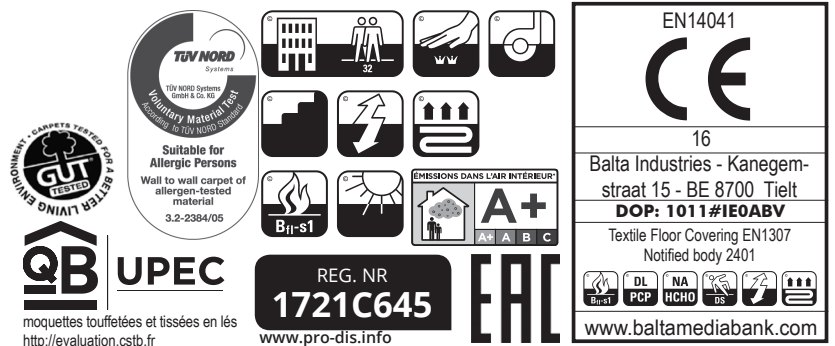
FASTNESS TO LIGHT SOLIDITÉ A LA LUMIÈRE LICHTECHTHEIT LICHTECHTHEID ISO 105-B02
 ≥ 5-6

COLOUR FASTNESS TO WATER SOLIDITÉ À L'EAU WASSERECHTHEIT WATERECHTHEID EN ISO 105-E01
 ≥ 4-5

FIRE RESISTANCE COMPORTEMENT AU FEU BRENNVERHALTEN BRANDGEDRAG EN 13501-1
 Bfl-s1 (if glued)

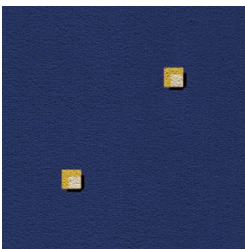
RUBBING FASTNESS SOLIDITÉ AU FROTTEMENT REIBECHTHEIT WRIJFECHTHEID EN ISO 105-X12
 ≥ 4

WIDTH LARGEUR BREITE BREEDTE EN ISO 3018
 ca. 400 cm

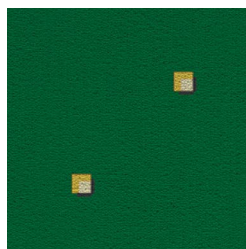




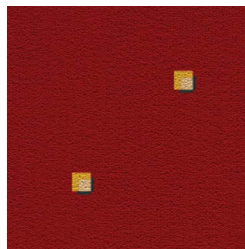
77



23

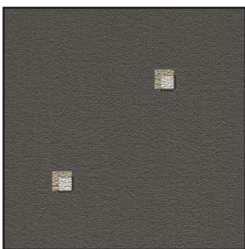


10

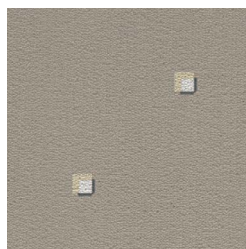


↔ 12 X ↓ 12 CM

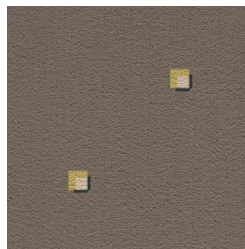
47



39



143



195

