

CONSTRUCTION STRUCTURE STRUKTUR STRUCTUUR	Tufting 1/10" saxony Tufté 1/10" saxony Getuftet 1/10" saxony Getuft 1/10" saxony
COMPOSITION DU VELOURS POLMATERIAAL POOLMATERIAAL	100% PA 6 IMPREL®
PRIMARY BACKING SUPPORT TRÄGERMATERIAAL TUFTDOEK	Non woven PES Non tissé Vlies Felt
SECONDARY BACKING DOSSIER RÜCKEN TAPIJTRUG	Action Back
PILE WEIGHT POIDS DU VELOURS POLEINSATZGEWICHT POOLGEWICHT	Ca. 900 gr/m ²
TOTAL WEIGHT POIDS TOTAL GESAMTGEWICHT TOTAAL GEWICHT	Ca. 1.875 gr/m ²
PILE HEIGHT EPAISSEUR DU VELOURS POLHÖHE POOLHOOGTE	Ca. 4 mm
TOTAL HEIGHT EPAISSEUR TOTAL GESAMTHÖHE TOTALE DIKTE	Ca. 7 mm
TUFT DENSITY NOMBRES DE POINTS NOPPENZAHL AANTAL PUNTEN	Ca. 170 000/m ²
PILE DENSITY DENSITÉ DU VELOURS POLROHDICHTHEIT POOLDICHTHEID	Ca. 0.143 g/cm ³
CLASSIFICATION CLASSEMENT KLASSIFIKATION CLASSIFICATIE	EN 1307 32 - LC2
UPEC	U3 P3 E1 C0 Certification CSTB: 10/276-07
CASTOR CHAIR SUITABILITY CHAISE À ROULETTES STUHLROLLENEIGNUNG ROLSTOELGESCHIKTHEID	EN 985 A: intensive use
STAIR SUITABILITY ESCALIERS TREPPENEIGNUNG TRAPPENGESCHIKTHEID	EN 1963 A: intensive use

PERMANENTLY ANTISTATIC ANTISTATIQUE PERMANENT PERMANENT ANTISTATISCH PERMANENT ANTISTATISCH ISO 6356
≤ 2 kV

IMPACT NOISE RATING ISOLATION PHONIQUE TRITTSCHALLVERBESSERUNG GELUIDSISOLATIE ISO 140-8
24 dB ΔLw

SOUND ABSORPTION ABSORPTION PHONIQUE SCHALLABSORPTIONSGRAD GELUIDSABSORPTIE ISO 354
0.20 Cw

THERMAL RESISTANCE RÉSISTANCE THERMIQUE WÄRMEDURCHLASSWIDERSTAND WARMTEDOORLAATWEERSTAND ISO 8302
0.15 m² K/W

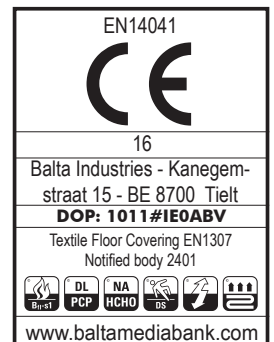
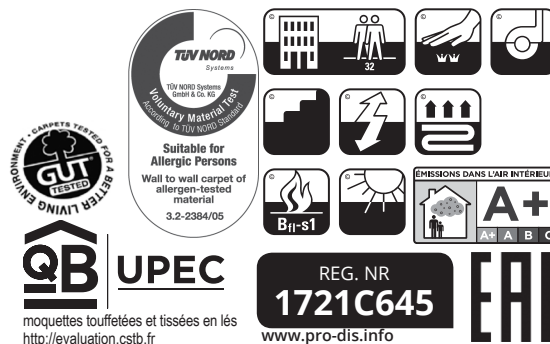
FASTNESS TO LIGHT SOLIDITÉ A LA LUMIÈRE LICHTECHTHEIT LICHTECHTHEID ISO 105-B02
≥ 5-6

COLOUR FASTNESS TO WATER SOLIDITÉ À L'EAU WASSERECHTHEIT WATERECHTHEID EN ISO 105-E01
≥ 4-5

FIRE RESISTANCE COMPORTEMENT AU FEU BRENNVERHALTEN BRANDGEDRAG EN 13501-1
Bfl-s1 (if glued)

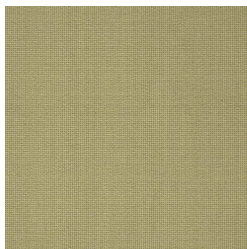
RUBBING FASTNESS SOLIDITÉ AU FROTTEMENT REIBECHTHEIT WRIJFECHTHEID EN ISO 105-X12
≥ 4

WIDTH LARGEUR BREITE BREEDTE EN ISO 3018
ca. 400 cm

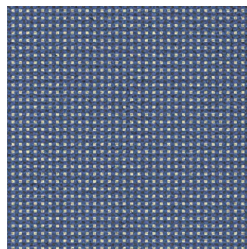




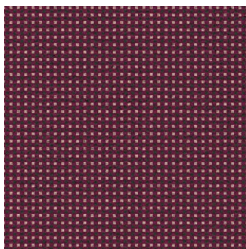
24



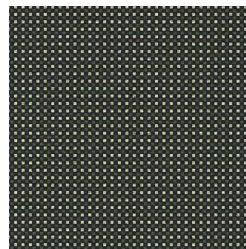
73



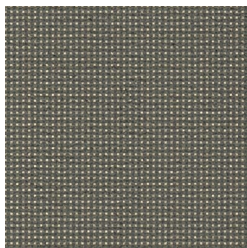
16



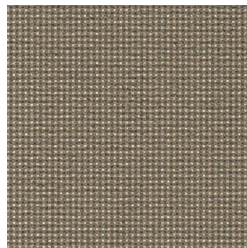
197



195



143



134



193

