

CONSTRUCTION Tufting 1/10" saxony
STRUCTURE Tufté 1/10" saxony
STRUKTUR Getuftet 1/10" saxony
STRUCTUUR Getuft 1/10" saxony

PILE MATERIAL 100% PA 6 IMPREL®
COMPOSITION DU VELOURS
POLMATERIAL
POOLMATERIAAL

PRIMARY BACKING Non woven PES
SUPPORT Non tissé
TRÄGERMATERIAL Vlies
TUFTDOEK Felt

SECONDARY BACKING Action Back
DOSSIER
RÜCKEN
TAPIJTRUG

PILE WEIGHT Ca. 900 gr/m²
POIDS DU VELOURS
POLEINSATZGEWICHT
POOLGEWICHT

TOTAL WEIGHT Ca. 1.875 gr/m²
POIDS TOTAL
GESAMTGEWICHT
TOTAAL GEWICHT

PILE HEIGHT Ca. 4 mm
EPAISSEUR DU VELOURS
POLHÖHE
POOLHOOGTE

TOTAL HEIGHT Ca. 7 mm
EPAISSEUR TOTAL
GESAMTHÖHE
TOTALE DIKTE

TUFT DENSITY Ca. 170 000/m²
NOMBRES DE POINTS
NOPPENZAHL
AANTAL PUNTEN

PILE DENSITY Ca. 0.143 g/cm³
DENSITÉ DU VELOURS
POLROHDICHTÉ
POOLDICHTHEID

CLASSIFICATION EN 1307
CLASSEMENT 32 - LC2
KLASSIFIKATION
CLASSIFICATIE

UPEC U3 P3 E1 C0
 Certification CSTB: 10/276-02

CASTOR CHAIR SUITABILITY EN 985
CHAISE À ROULETTES A: intensive use
STUHLROLLENEIGNUNG
ROLSTOELGESCHIKTHEID

STAIR SUITABILITY EN 1963
ESCALIERS A: intensive use
TREPPENEIGNUNG
TRAPPENGESCHIKTHEID

PERMANENTLY ANTISTATIC ISO 6356
ANTISTATIQUE PERMANENT ≤ 2 kV
PERMANENT ANTISTATISCH
PERMANENT ANTISTATISCH

IMPACT NOISE RATING ISO 140-8
ISOLATION PHONIQUE 24 dB ΔLw
TRITTSCHALLVERBESSERUNG
GELUIDSISOLATIE

SOUND ABSORPTION ISO 354
ABSORPTION PHONIQUE 0.20 αw
SCHALLABSORPTIONSGRAD
GELUIDSABSORPTIE

THERMAL RESISTANCE ISO 8302
RÉSISTANCE THERMIQUE 0.15 m² K/W
WÄRMEDURCHLASSWIDERSTAND
WARMTEDOORLAATWEERSTAND

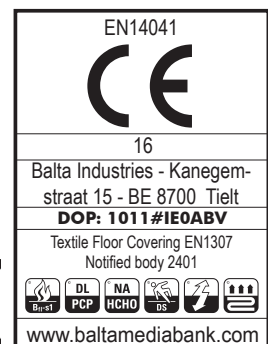
FASTNESS TO LIGHT ISO 105-B02
SOLIDITÉ A LA LUMIÈRE ≥ 5-6
LICHTECHTHEIT
LICHTECHTHEID

COLOUR FASTNESS TO WATER EN ISO 105-E01
SOLIDITÉ À L'EAU ≥ 4-5
WASSERECHTHEIT
WATERECHTHEID

FIRE RESISTANCE EN 13501-1
COMPOTEMENT AU FEU Bfl-s1 (if glued)
BRENNVERHALTEN
BRANDGEDRAG

RUBBING FASTNESS EN ISO 105-X12
SOLIDITÉ AU FROTTEMENT ≥ 4
REIBECHTHEIT
WRIJFECHTHEID

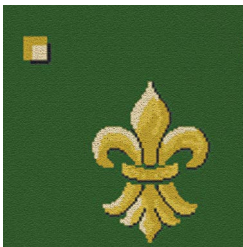
WIDTH EN ISO 3018
LARGEUR ca. 400 cm
BREITE
BREEDTE



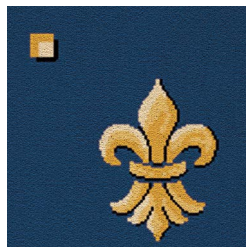


↔ 32 X ↕ 32 CM

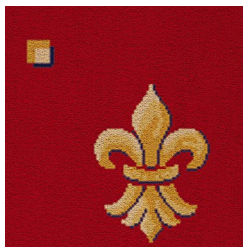
23



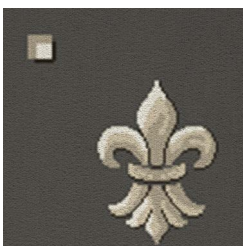
77



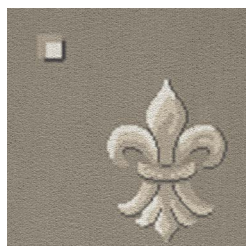
10



47



39



143



195

