




CONSTRUCTION STRUCTURE STRUKTUR STRUCTUUR	Tufting 1/10" loop pile Tufté 1/10" bouclé Getuftet 1/10" Schlinge Getuft 1/10" lussenpool
PILE MATERIAL COMPOSITION DU VELOURS POLMATERIAL POOLMATERIAAL	100% PA 6 IMPREL®
PRIMARY BACKING SUPPORT TRÄGERMATERIAL TUFTDOEK	Non woven PES Non woven PES Vlies PES Non woven PES
SECONDARY BACKING DOSSIER RÜCKEN TAPIJTRUG	Action Back
PILE WEIGHT POIDS DU VELOURS POLEINSATZGEWICHT POOLGEWICHT	Ca. 460 gr/m ²
TOTAL WEIGHT POIDS TOTAL GESAMTGEWICHT TOTAAL GEWICHT	Ca. 1.490 gr/m ²
PILE HEIGHT EPAISSEUR DU VELOURS POLHÖHE POOLHOOGTE	Ca. 2,5 mm
TOTAL HEIGHT EPAISSEUR TOTALE GESAMTHÖHE TOTALE DIKTE	Ca. 4,2 mm
TUFT DENSITY NOMBRES DE POINTS NOPPENZAHL AANTAL PUNTEN	Ca. 205 000/m ²
PILE DENSITY DENSITÉ DU VELOURS POLROHDICHTÉ POOLDICHTHEID	Ca. 0.135 g/cm ³
CLASSIFICATION CLASSEMENT KLASSIFIKATION CLASSIFICATIE	EN 1307 33 - LC1
UPEC	U3 P3 E1 C0 Certification CSTB:10/271
CASTOR CHAIR SUITABILITY CHAISE À ROULETTES STUHLROLLENEIGNUNG ROLSTOELGESCHIKTHEID	EN 985 A: intensive use
STAIR SUITABILITY ESCALIERS TREPPENEIGNUNG TRAPPENGESCHIKTHEID	EN 1963 A: intensive use


PERMANENTLY ANTISTATIC ANTISTATIQUE PERMANENT PERMANENT ANTISTATISCH PERMANENT ANTISTATISCH	ISO 6356 < 2 kV
IMPACT NOISE RATING ISOLATION PHONIQUE TRITTSCHALLVERBESSERUNG GELUIDSISOLATIE	ISO 140-8 21 dB ΔLw
SOUND ABSORPTION ABSORPTION PHONIQUE SCHALLABSORPTIONSGRAD GELUIDSABSORPTIE	ISO 354 0.15 αw
THERMAL RESISTANCE RÉSISTANCE THERMIQUE WÄRMEDURCHLASSWIDERSTAND WARMTEDOORLAATWEERSTAND	ISO 8302 0.06 m ² K/W
FASTNESS TO LIGHT SOLIDITÉ A LA LUMIÈRE LICHTECHTHEIT LICHTECHTHEID	ISO 105-B02 ≥ 5-6
COLOUR FASTNESS TO WATER SOLIDITÉ À L'EAU WASSERECHEITHEIT WATERECHEITHEID	EN ISO 105-E01 ≥ 4-5
FIRE RESISTANCE COMPORTEMENT AU FEU BRENNVERHALTEN BRANDGEDRAG	EN 13501-1 Bfl-s1 (if glued)
RUBBING FASTNESS SOLIDITÉ AU FROTTEMENT REIBECHTHEIT WRIJFECHTHEID	EN ISO 105-X12 ≥ 4
NUMBER OF COLOURS NOMBRES DE COULEURS ANZAHL FARBEN AANTAL KLEUREN	26
WIDTH LARGEUR BREITE BREEDTE	EN ISO 3018 ca. 400 cm





TUV NORD
Systems
Voluntary Material Test
Suitable for Allergic Persons
Wall to wall carpet of allergen-ispated material
3.2-2384/05






































EN14041
16
Balta Industries - Kanegem-
straat 15 - BE 8700 Tielt
DOP: 1011#IE0ABV
Textile Floor Covering EN1307
Notified body 2401



UPEC
moquettes touffetées et tissées en lés
<http://evaluation.cstb.fr>

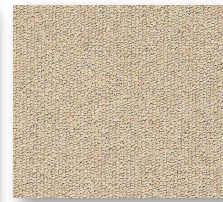
REG. NR
CC5E2518
www.pro-dis.info





www.baltamediabank.com

master AB



▲ 37



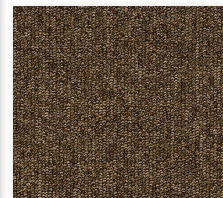
▲ 33



▲ 45



▲ 36



▲ 44



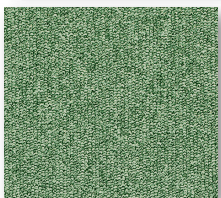
▲ 194



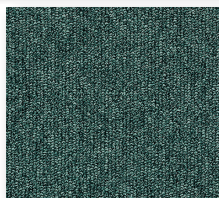
▲ 880



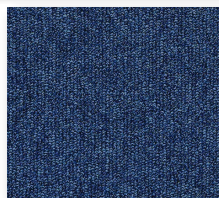
▲ 198



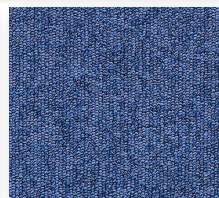
▲ 27



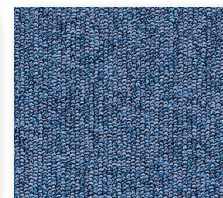
▲ 490



▲ 370



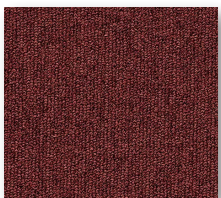
▲ 76



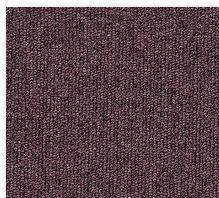
▲ 350



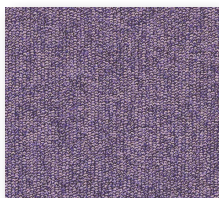
▲ 297



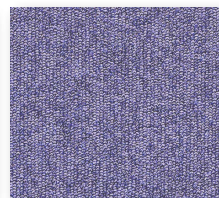
▲ 116



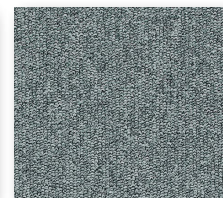
▲ 19



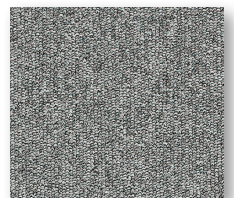
▲ 85



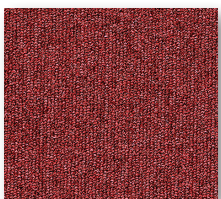
▲ 87



▲ 960



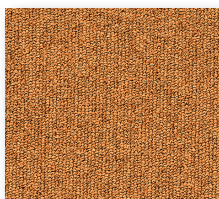
▲ 196



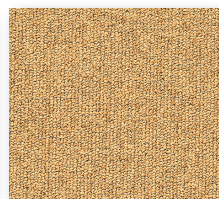
▲ 11



▲ 66



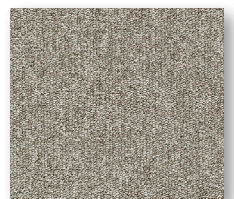
▲ 55



▲ 52



▲ 900



▲ 950