

# forza

|   |   |   |   |
|---|---|---|---|
| <b>FABRICAGEMETHODE</b><br>Naaldvilt  | <b>MÉTHODE DE FABRICATION</b><br>Aiguilleté                                   | <b>HERSTELLUNGSVERFAHREN</b><br>Nadelvlies  | <b>MANUFACTURING PROCESS</b><br>Needle felt                         |
| <b>POOLSAMENSTELLING</b><br>100% PP   | <b>COMPOSITION DU VELOURS</b><br>100% PP                                      | <b>POLMATERIAL</b><br>100% PP   | <b>PILE CONTENT</b><br>100% PP                                      |
| <b>RUG</b><br>Cres/Contract resine  | <b>DOSSIER</b><br>Cres/Contract resine  | <b>RÜCKENAUSRÜSTUNG</b><br>Cres/Contract resine                                   | <b>SECONDARY BACKING</b><br>Cres/Contract resine                    |
| <b>POOLGEWICHT</b><br>ca. 850 gr/m <sup>2</sup>                               | <b>POIDS DU VELOURS</b><br>ca. 850 gr/m <sup>2</sup>                          | <b>POLGEWICHT</b><br>ca. 850 gr/m <sup>2</sup>                                    | <b>PILE WEIGHT</b><br>ca. 850 gr/m <sup>2</sup>                     |
| <b>TOTAAL GEWICHT</b><br>ca. 1.100 gr/m <sup>2</sup>                          | <b>POIDS TOTAL</b><br>ca. 1.100 gr/m <sup>2</sup>                             | <b>GESAMTGEWICHT</b><br>ca. 1.100 gr/m <sup>2</sup>                               | <b>TOTAL WEIGHT</b><br>ca. 1.100 gr/m <sup>2</sup>                  |
| <b>TOTALE HOOGTE</b><br>ca. 7 mm  | <b>HAUTEUR TOTALE</b><br>ca. 7 mm   | <b>GESAMTHÖHE</b><br>ca. 7 mm   | <b>TOTAL HEIGHT</b><br>ca. 7 mm                                     |
| <b>PERMANENT ANTISTATISCH</b><br><1,9 kV                                      | <b>ANTISTATIQUE PERMANENT</b><br><1,9 kV                                      | <b>PERMANENT ANTISTATISCH</b><br><1,9 kV  | <b>PERMANENTLY ANTISTATIC</b><br><1,9 kV                            |
| <b>GELUIDSISOLATIE</b><br>ISO 140-8: ca 22 dB delta L                         | <b>ISOLATION AUX BRUITS D'IMPACT</b><br>ISO 140-8: ca 22 dB delta L           | <b>TRITTSCHALLDÄMMUNG</b><br>ISO 140-8: ca 22 dB delta L                          | <b>SOUND INSULATION</b><br>ISO 140-8: ca 22 dB delta L              |
| <b>GELUIDSABSORPTIE</b><br>ISO 354: ca 0.20 alpha w                           | <b>ABSORPTION PHONIQUE</b><br>ISO 354: ca 0.20 alpha w                        | <b>SCHALLABSORPTIONSGRAD</b><br>ISO 354: ca 0.20 alpha w                          | <b>SOUND ABSORPTION</b><br>ISO 354: ca 0.20 alpha w                 |
| <b>WARMTEDOORLAATBAARHEID</b><br>ca. 0,11 m <sup>2</sup> K/W                  | <b>RÉSISTANCE THERMIQUE</b><br>ca. 0,11 m <sup>2</sup> K/W                    | <b>WÄRMEDURCHLASSWIDERSTAND</b><br>ca. 0,11 m <sup>2</sup> K/W                    | <b>THERMAL RESISTANCE</b><br>ca. 0,11 m <sup>2</sup> K/W            |
| <b>LICHTECHTHEID</b><br>5-6   | <b>RÉSISTANCE À LA LUMIÈRE</b><br>5-6   | <b>LICHTECHTHEIT</b><br>5-6   | <b>LIGHT FASTNESS</b><br>5-6  |
| <b>WATERECHTHEID</b><br>4-5   | <b>RÉSISTANCE À L'EAU</b><br>4-5  | <b>WASSERECHTHEIT</b><br>4-5  | <b>WATER RESISTANCE</b><br>4-5                                      |
| <b>BRANDKLASSE</b><br>Brandklassement C <sub>fl</sub> -s1<br>indien verkleefd | <b>CLASSEMENT FEU</b><br>Classement feu C <sub>fl</sub> -s1<br>en pose collée | <b>BRANDVERHALTENSKLASSE</b><br>Baustoffkl. C <sub>fl</sub> -s1<br>bei Verklebung | <b>FIRE CLASS</b><br>Fireresistance C <sub>fl</sub> -s1<br>if glued |

#### Colours and widths

| Forza  | 568 | 573 | 826 | 900 | 929 | 963 | 974 | 990 |
|--------|-----|-----|-----|-----|-----|-----|-----|-----|
| ca 2 m | •   | •   | •   | •   | •   | •   | •   | •   |
| ca 4 m | •   | •   | •   | •   | •   | •   | •   | •   |



# forza



▲ 826



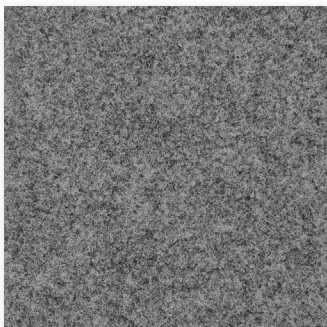
▲ 929



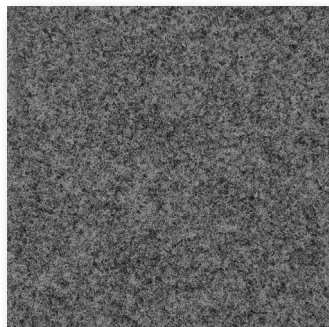
▲ 568



▲ 573



▲ 900



▲ 963



▲ 990



▲ 974