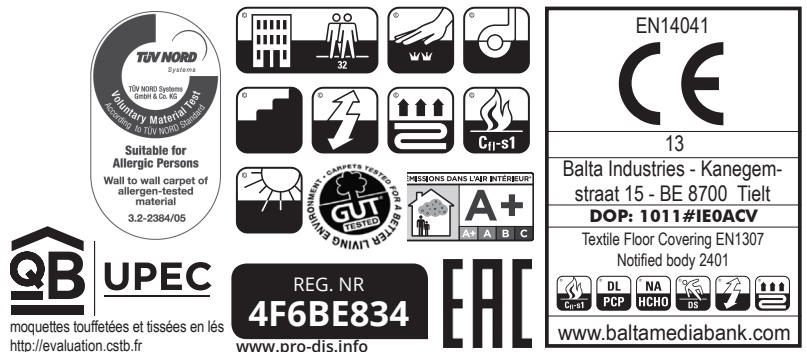


|                                 |  |                                 |                         |
|---------------------------------|--|---------------------------------|-------------------------|
| <b>CONSTRUCTION</b>             | Tufting 1/10" cut pile COC               | <b>PERMANENTLY ANTISTATIC</b>   | ISO 6356                |
| <b>STRUCTURE</b>                | Tufté 1/10" velours COC                  | <b>ANTISTATIQUE PERMANENT</b>   | < 2 kV                  |
| <b>STRUKTUR</b>                 | Getuftet 1/10" COC-Velours               | <b>PERMANENT ANTISTATISCH</b>   |                         |
| <b>STRUCTUUR</b>                | Getuft 1/10" velours COC                 | <b>PERMANENT ANTISTATISCH</b>   |                         |
| <b>PILE MATERIAL</b>            | 100% PA 6 IMPREL®                        | <b>IMPACT NOISE RATING</b>      | ISO 140-8               |
| <b>COMPOSITION DU VELOURS</b>   |  | <b>ISOLATION PHONIQUE</b>       | 24 dB ΔLw               |
| <b>POLMATERIAL</b>              |  | <b>TRITTSCHALLVERBESSERUNG</b>  |                         |
| <b>POOLMATERIAAL</b>            |  | <b>GELUIDSISOLATIE</b>          |                         |
| <b>PRIMARY BACKING</b>          | Woven PP                                 | <b>SOUND ABSORPTION</b>         | ISO 354                 |
| <b>SUPPORT</b>                  | PP tissé                                 | <b>ABSORPTION PHONIQUE</b>      | 0.20 αw                 |
| <b>TRÄGERMATERIAL</b>           | Bändchengewebe PP                        | <b>SCHALLABSORPTIONSGRAD</b>    |                         |
| <b>TUFTDOEK</b>                 | Geweven PP                               | <b>GELUIDSABSORPTIE</b>         |                         |
| <b>SECONDARY BACKING</b>        | Action Back                              | <b>THERMAL RESISTANCE</b>       | ISO 8302                |
| <b>DOSSIER</b>                  |  | <b>RÉSISTANCE THERMIQUE</b>     | 0.10 m² K/W             |
| <b>RÜCKEN</b>                   |  | <b>WÄRMEDURCHLASSWIDERSTAND</b> |                         |
| <b>TAPIJTRUG</b>                |  | <b>WARMTEDOORLAATWEERSTAND</b>  |                         |
| <b>PILE WEIGHT</b>              | Ca. 730 gr/m²                            | <b>FASTNESS TO LIGHT</b>        | ISO 105-B02             |
| <b>POIDS DU VELOURS</b>         |  | <b>SOLIDITÉ A LA LUMIÈRE</b>    | ≥ 5-6                   |
| <b>POLEINSATZGEWICHT</b>        |  | <b>LICHTECHTHEIT</b>            |                         |
| <b>POOLGEWICHT</b>              |  | <b>LICHTECHTHEID</b>            |                         |
| <b>TOTAL WEIGHT</b>             | Ca. 1.730 gr/m²                          | <b>COLOUR FASTNESS TO WATER</b> | EN ISO 105-E01          |
| <b>POIDS TOTAL</b>              |  | <b>SOLIDITÉ À L'EAU</b>         | ≥ 4-5                   |
| <b>GESAMTGEWICHT</b>            |  | <b>WASSERRECHTHEIT</b>          |                         |
| <b>TOTAAL GEWICHT</b>           |  | <b>WATERECHTHEID</b>            |                         |
| <b>PILE HEIGHT</b>              | Ca. 4 mm                                 | <b>FIRE RESISTANCE</b>          | EN 13501-1              |
| <b>EPAISSEUR DU VELOURS</b>     |  | <b>COMPORTEMENT AU FEU</b>      | Cfl-s1 (if glued)       |
| <b>POLHÖHE</b>                  |  | <b>BRENNVERHALTEN</b>           |                         |
| <b>POOLHOOGTE</b>               |  | <b>BRANDGEDRAG</b>              |                         |
| <b>TOTAL HEIGHT</b>             | Ca. 6 mm                                 | <b>RUBBING FASTNESS</b>         | EN ISO 105-X12          |
| <b>EPAISSEUR TOTALE</b>         |  | <b>SOLIDITÉ AU FROTTEMENT</b>   | ≥ 4                     |
| <b>GESAMTHÖHE</b>               |  | <b>REIBECHTHEIT</b>             |                         |
| <b>TOTALE DIKTE</b>             |  | <b>WRIJFECHTHEID</b>            |                         |
| <b>TUFT DENSITY</b>             | Ca. 225 000/m²                           | <b>NUMBER OF COLOURS</b>        | 21                      |
| <b>NOMBRES DE POINTS</b>        |  | <b>NOMBRES DE COULEURS</b>      |                         |
| <b>NOPPENZAHL</b>               |  | <b>ANZAHL FARBEN</b>            |                         |
| <b>AANTAL PUNTEN</b>            |  | <b>AANTAL KLEUREN</b>           |                         |
| <b>PILE DENSITY</b>             | Ca. 0.111 g/cm³                          | <b>WIDTH</b>                    | EN ISO 3018             |
| <b>DENSITÉ DU VELOURS</b>       |  | <b>LARGEUR</b>                  | ca. 400 cm (21 colours) |
| <b>POLROHDICHTÉ</b>             |  | <b>BREITE</b>                   | ca. 500 cm (12 colours) |
| <b>POOLDICHTHEID</b>            |  | <b>BREEDTE</b>                  |                         |
| <b>CLASSIFICATION</b>           | EN 1307                                  |                                 |                         |
| <b>CLASSEMENT</b>               | 32 - LC2                                 |                                 |                         |
| <b>KLASSIFIKATION</b>           |  |                                 |                         |
| <b>CLASSIFICATIE</b>            |  |                                 |                         |
| <b>UPEC</b>                     | U3 P3 E1 C0<br>Certification CSTB:09/261 |                                 |                         |
| <b>CASTOR CHAIR SUITABILITY</b> | EN 985                                   |                                 |                         |
| <b>CHAISE À ROULETTES</b>       | A: intensive use                         |                                 |                         |
| <b>STUHLROLLENEIGNUNG</b>       |  |                                 |                         |
| <b>ROLSTOELGESCHIKTHEID</b>     |  |                                 |                         |
| <b>STAIR SUITABILITY</b>        | EN 1963                                  |                                 |                         |
| <b>ESCALIERS</b>                | A: intensive use                         |                                 |                         |
| <b>TREPPENEIGNUNG</b>           |  |                                 |                         |
| <b>TRAPPENGESCHIKTHEID</b>      |  |                                 |                         |



# fortesse SDE new AB



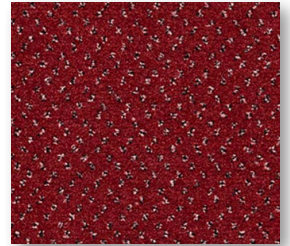
▲ 144 4 & 5 m



▲ 17 4 m



▲ 40 4 & 5 m



▲ 12 4 & 5 m



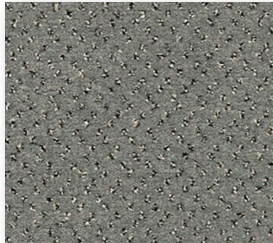
▲ 138 4 m



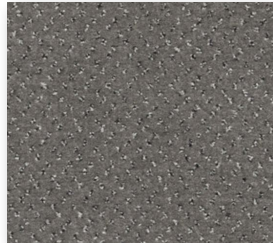
▲ 64 4 m



▲ 197 4 & 5 m



▲ 90 4 & 5 m



▲ 94 4 & 5 m



▲ 39 4 & 5 m



▲ 53 4 m



▲ 299 4 m



▲ 96 4 & 5 m



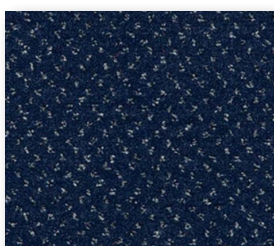
▲ 93 4 & 5 m



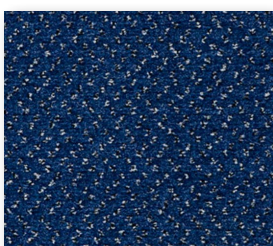
▲ 173 4 & 5 m



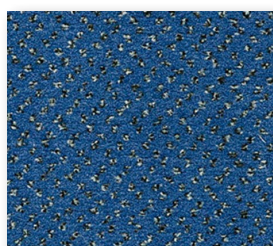
▲ 123 4 m



▲ 178 4 m



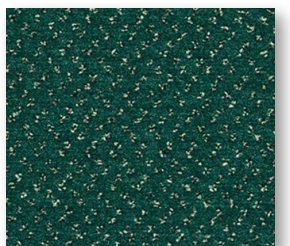
▲ 177 4 & 5 m



▲ 174 4 m



▲ 276 4 & 5 m



▲ 24 4 m