

CONSTRUCTION STRUCTURE STRUKTUR STRUCTUUR Tufting 5/64" cut pile
Tufté 5/64" velours
Getuftet 5/64" Velours
Getuft 5/64" velours

PILE MATERIAL COMPOSITION DU VELOURS POLMATERIAL POOLMATERIAAL 100% PA 6 IMPREL®

PRIMARY BACKING SUPPORT TRÄGERMATERIAL TUFTDOEK Non woven PES
Non tissé
Vlies
Felt

SECONDARY BACKING DOSSIER RÜCKEN TAPIJTRUG Action Back or
Ultratex

PILE WEIGHT POIDS DU VELOURS POLEINSATZGEWICHT POOLGEWICHT Ca. 630 gr/m²

TOTAL WEIGHT POIDS TOTAL GESAMTGEWICHT TOTAAL GEWICHT Ca. 1.650 gr/m² (AB)
Ca. 1.700 gr/m² (UX)

PILE HEIGHT EPAISSEUR DU VELOURS POLHÖHE POOLHOOGTE Ca. 5 mm

TOTAL HEIGHT EPAISSEUR TOTALE GESAMTHÖHE TOTALE DIKTE Ca. 7 mm

TUFT DENSITY NOMBRES DE POINTS NOPPENZAHL AANTAL PUNTEN Ca. 378 000/m²

PILE DENSITY DENSITÉ DU VELOURS POLROHDICHTÉ POOLDICHTHEID Ca. 0.098 g/cm³

CLASSIFICATION CLASSEMENT KLASSIFIKATION CLASSIFICATIE EN 1307
32 - LC2 (AB)
32 - LC3 (UX)

UPEC CHAMBORD AB U3 P3 E1 C0 only on AB
Certification CSTB: 10/265

CASTOR CHAIR SUITABILITY CHAISE À ROULETTES STUHLROLLENEIGNUNG ROLSTOELGESCHIKTHEID EN 985
A: intensive use

STAIR SUITABILITY ESCALIERS TREPPENEIGNUNG TRAPPENGESCHIKTHEID EN 1963
A: intensive use

PERMANENTLY ANTISTATIC ANTISTATIQUE PERMANENT PERMANENT ANTISTATISCH PERMANENT ANTISTATISCH ISO 6356
≤ 2 kV

IMPACT NOISE RATING ISOLATION PHONIQUE TRITTSCHALLVERBESSERUNG GELUIDSISOLATIE ISO 140-8
ca. 24 dB ΔLw (AB)
ca. 29 dB ΔLw (UX)

SOUND ABSORPTION ABSORPTION PHONIQUE SCHALLABSORPTIONSGRAD GELUIDSABSORPTIE ISO 354
0.20 αw (AB)
0.30 αw (UX)

THERMAL RESISTANCE RÉSISTANCE THERMIQUE WÄRMEDURCHLASSWIDERSTAND WARMTEDOORLAATWEERSTAND ISO 8302
0.13 m² K/W (AB)
0.15 m² K/W (UX)

FASTNESS TO LIGHT SOLIDITÉ A LA LUMIÈRE LICHTECHTHEIT LICHTECHTHEID ISO 105-B02
≥ 5-6

COLOUR FASTNESS TO WATER SOLIDITÉ À L'EAU WASSERECHEIT WATERECHEID EN ISO 105-E01
≥ 4-5

FIRE RESISTANCE COMPORTEMENT AU FEU BRENNVERHALTEN BRANDGEDRAG EN 13501-1
Action Back: Bfl-s1 if glued
UX: Cfl-s1

RUBBING FASTNESS SOLIDITÉ AU FROTTEMENT REIBECHTHEIT WRIJFECHTHEID EN ISO 105-X12
≥ 4

NUMBER OF COLOURS NOMBRES DE COULEURS ANZAHL FARBEN AANTAL KLEUREN 8

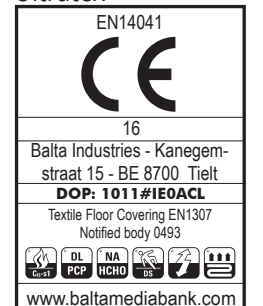
WIDTH LARGEUR BREITE BREEDTE EN ISO 3018
ca. 400 cm



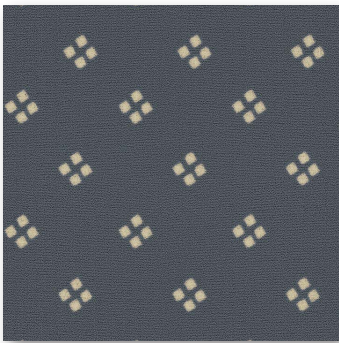
Action Back



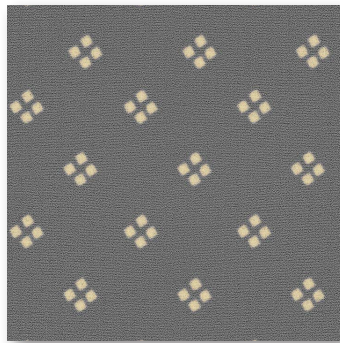
Ultratex



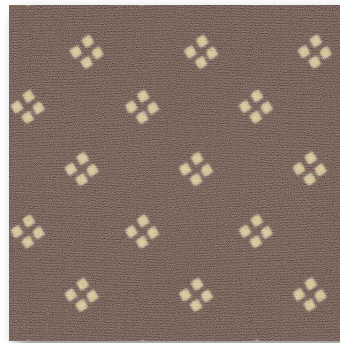
chambord AB/UX



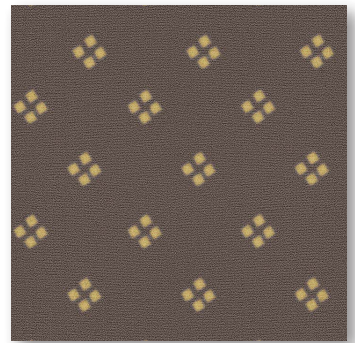
▲ 197



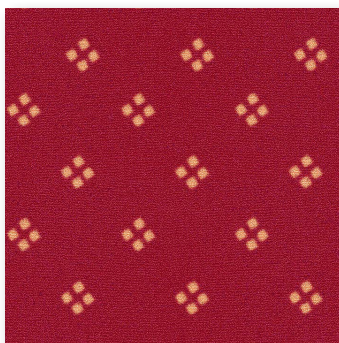
▲ 193



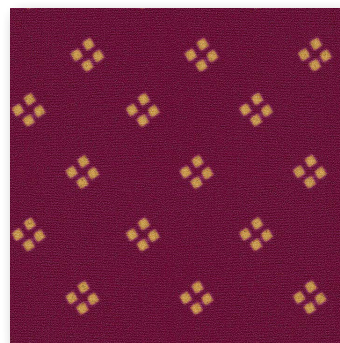
▲ 44



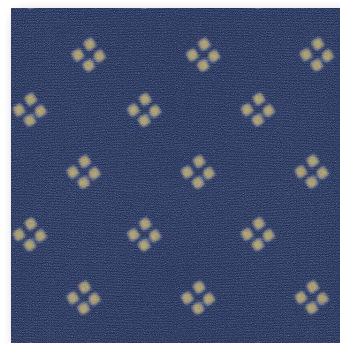
▲ 49



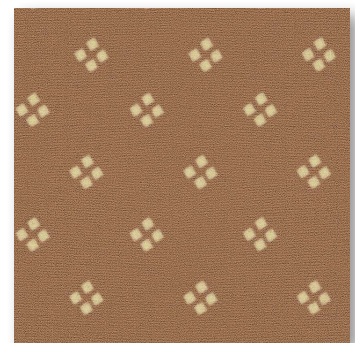
▲ 10



▲ 17



▲ 77



▲ 55

↔ ca. 8 cm ↔ ca. 8 cm

 **arc edition**
performance flooring